

Timber frame to be fixed around perimeter with proprietary L profile stainless steel anchor straps located at stud positions (see materials schedule for centres) with end out under outer leaf.

NOTE: anchor straps should be fixed after timber frame superstructure has been erected and squared.

Outer leaf should stop at ground level until timber-wall has been erected.

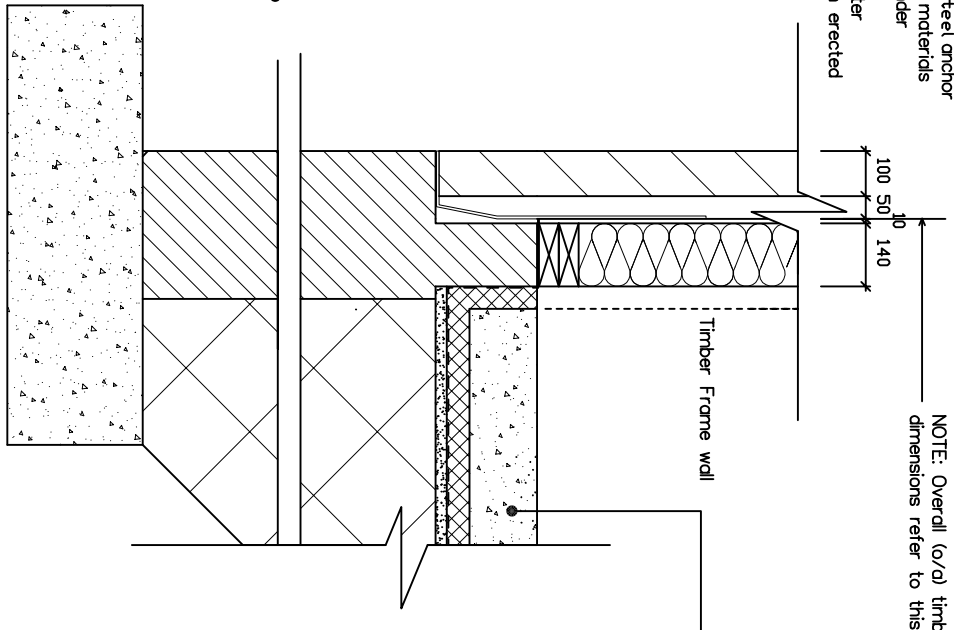
Fix 150mm wide d.p.c. on bottom of timber frame wall before erecting.

Floor down to lap over inner leaf at floor level

NOTE: It is imperative that the top of rising walls to take timber frame, and floor slabs, are finished absolutely level.

Footings/dead bldg. to be built solid or cavity, with conc. infill to cavity to ground level.

Concrete foundations to comply with Irish bldg. regs.



NOTE: Overall (o/d) timber frame dimensions refer to this face

150mm powerfloat finish conc. floor slab on insulation board to comply with current Irish bldg. regs. on radon barrier lapped and bonded at joints on mech. compacted and fine sand blinding hardcore filling not less than 150mm deep

# Foundation/Base detail

Copyright 2013  
 RECEIVED, INSPECTED,  
 AND APPROVED -  
 DATE - \_\_\_\_\_  
 SIGN - \_\_\_\_\_

**Timbertech Homes Ltd.**  
 Ballinckill Yard,  
 Enfield,  
 Co. Meath.  
 Tel: ++353 (0) 46 954 2854  
 Fax: ++353 (0) 46 954 2853

Client: Timbertech Homes Ltd. Ballinckill Yard Enfield, Co. Meath	Date: 11/01/13 Drawn by: Fergal O' Malley
Title: Foundation Detail - 140mm T.F. External Wall	Drawing Nr.: DET. 01 Project: Details